

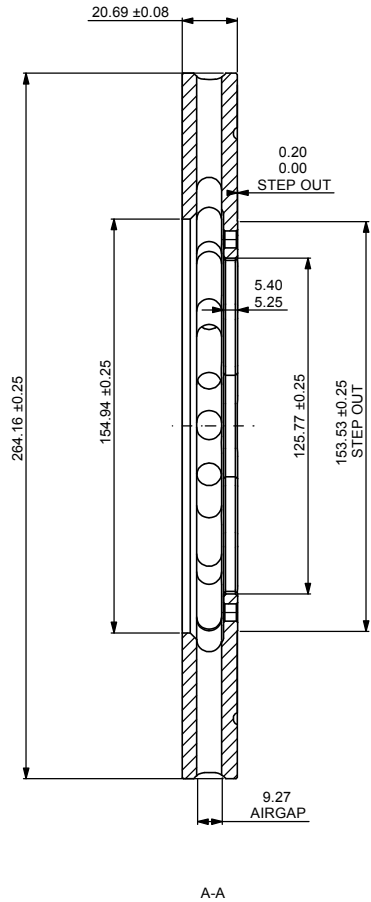
DISC PART NUMBERS:

AP4136-208 NON HANDED

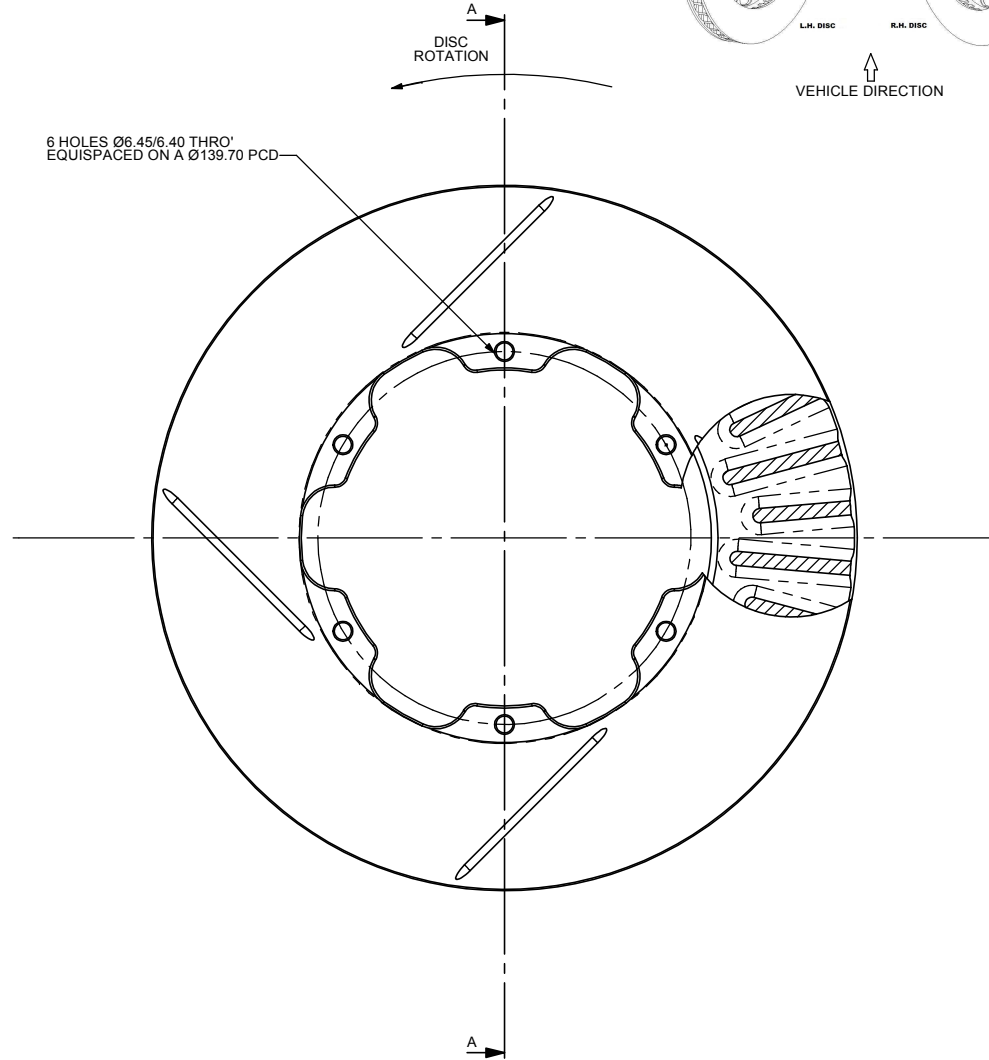
THIS IS A 36 VANES DISC OF MASS 3.63Kg

THIS DISC WAS DESIGNED TO WORK WITH A D53.5 DEPTH PAD.

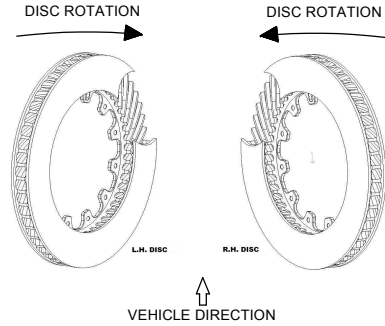
FOR DISC MOUNTING TECHNIQUES, BEDDING PROCEDURE AND DISC COOLING RECOMMENDATIONS SEE AP RACING BRAKE DISC CATALOGUE.



6 HOLES Ø6.45/6.40 THRO' EQUISPACED ON A Ø139.70 PCD



DISC INSTALLATION



AP Racing
Wheler Road
Coventry
CV3 4LB

Tel: +44 (0) 24 7663 9595
Fax: +44 (0) 24 7663 9559
e-mail: engineering@apracings.com
Web site: <http://www.apracings.com>

© AP Racing Ltd. 2005

Issue No.	Alterations			Zone	Initials
	Date & No.	Particulars			
2	16/05/06 B4460	REDRAWN ON SOLIDWORKS DIM 5.40/5.25 WAS 5.65/5.50 CONVERTED TO TWIN TURN			
3	22/04/10	MTG HOLE PCD WAS SHOWN INCORRECTLY	8H		

SCALE 1:1 SHEET 1 OF 1

DRAWN Steve Thomas

APPROVED

DERIVED FROM

TITLE

Ø264.16 x 20.69

VFNTH ATFD DISC